

FOX commercial inverter Modbus interface definition description



FoxESS Co., Ltd.

Document version V1.05.03.00

Release date 2025-01-15

Table of contents

1 Supported model list	1
1.1 Model description	1
2 Introduction	2
2.1 Terms and abbreviations	2
3 Supported model list	3
4 Interface usage instructions	33
4.1 Alarm information	33
4.2 Grid standard code	35
5 Communication protocol overview	39
5.1 Physical layer	39
5.2 Data link layer	39
5.2.1 Modbus-RTU	39
5.2.2 Modbus- TCP	41
5.3 Application layer	44
5.3.1 Function code list	44
5.3.2 Exception code list	44
5.3.3 Read register (0x03)	45
5.3.4 Write a single register (0x06)	45
5.3.5 Write multiple registers (0x10)	46
5.3.6 Configure slave address	47

2 Introduction

The Modbus protocol is issued as a general device-level communication protocol standard. This document describes the Modbus protocol for FoxESS inverter, which is used to standardize subsequent third-party integrated development. Since the FoxESS inverter complies with the standard modbus specification, this document focuses on the information specific to the FoxESS inverter.

For additional information, please refer to the description in the ModBus standard specification document. For a detailed description of the standard protocols used by the FoxESS Inverter as well as customized sections and examples of interactions, please read [5 Communication Protocol Overview](#) .

2.1 Terms and abbreviations

Table 2-1 Terms and abbreviation definitions

Name	Description
master node	In master-slave communication, the party that actively initiates communication is called the master node.
slave node	In master-slave communication, the party that passively responds to commands is called a slave node.
broadcast address	Fixed to 0
Register address	The register address corresponds to a 2-byte message
U16	Unsigned 16-bit integer
U32	Unsigned 32-bit integer
I16	Signed 16-bit integer
I32	Signed 32-bit integer
STR	string
MLD	multibyte
Bitfield16	16-bit wide bitwise representation of data
Bitfield32	32-bit wide bitwise representation of data
-	not involving
s	Second
INV	inverter
BMS	battery management system
name	describe
RO	Read-only data
RW	Readable and writable data
WO	Write data only

3 Supported model list

Table 3-1 Inverter model definition table

Serial number	Signal name	Read and write	Type	Unit	Gain	Address	Number	Scope
1	Model name	RO	STR	N/A	1	30000	16	
2	SN	RO	STR	N/A	1	30016	16	
3	MFG ID	RO	STR	N/A	1	30032	16	

Table 3-2 Inverter version definition table

Serial number	Signal name	Read and write	Type	Unit	Gain	Address	Number	Scope
4	Master Version	RO	U16	N/A	N/A	36001	1	
5	Slave Version	RO	U16	N/A	N/A	36002	1	
6	Manager Version	RO	U16	N/A	N/A	36003	1	
7	Meter1 SN	RO	STR	N/A	N/A	36100	16	
8	Meter1 MFG ID	RO	STR	N/A	N/A	36116	16	
9	Meter1 TYPE	RO	STR	N/A	N/A	36132	16	
10	Meter1 Version	RO	STR	N/A	N/A	36148	1	
11	Meter2 SN	RO	STR	N/A	N/A	36200	16	
12	Meter2 MFG ID	RO	STR	N/A	N/A	36216	16	
13	Meter2 TYPE	RO	STR	N/A	N/A	36232	16	
14	Meter2 Version	RO	STR	N/A	N/A	36248	1	

Table 3-3 Battery version definition table

Serial number	Signal name	Read and write	Type	Unit	Gain	Addresses	Number	Scope
15	BMS1 Connection Status	RO	U16	N/A	N/A	37002	1	0: Offline 1: Online
16	BMS1 Master Version	RO	U16	N/A	N/A	37003	1	
17	BMS1 Master Type	RO	U16	N/A	N/A	37004	1	
18	BMS1 Master SN	RO	STR	N/A	N/A	37005	16	
19	BMS1 Slave Number	RO	U16	N/A	1	37032	1	Range:[0, 32], and 0 is invalid.
20	BMS1 Slave 1 Version	RO	U16	N/A	N/A	37033	1	Maximum support for 32 channels of slave control. The number of channels actually read by the host computer is in accordance with the number of channels defined in "BMS1 Number of Slaves". The corresponding version of each battery: 37033 + (n - 1), where n is the number of slaves in the range of [1, 32].
21	BMS1 Slave 2 Version	RO	U16	N/A	N/A	37034	1	
22	BMS1 Slave1 SN	RO	STR	N/A	N/A	37097	16	最大支持32路从控。上位机实际读取路数按照“BMS1从控个数”定义的路数读取。每路电池对应的SN: 37097 + 16* (n - 1), 其中n为从控个数范围是[1, 32]
23	BMS1 Slave2 SN	RO	STR	N/A	N/A	37113	16	

24	BMS1 Voltage	RO	U16	V	10	37609	1	
25	BMS1 Current	RO	I16	A	10	37610	1	
26	BMS1 Ambient Temperature	RO	I16	°C	10	37611	1	
27	BMS1 SoC	RO	U16	%	1	37612	1	
28	BMS1 Max Temperature	RO	I16	°C	10	37617	1	
29	BMS1 Min Temperature	RO	I16	°C	10	37618	1	
30	BMS1 Max Cell Voltage	RO	U16	mV	1	37619	1	
31	BMS1 Min Cell Voltage	RO	U16	mV	1	37620	1	
32	BMS1 SOH	RO	U16	%	1	37624	1	
33	BMS1 Fault1	RO	Bitfield 16	N/A	N/A	37626	1	
34	BMS1 Fault2	RO	Bitfield 16	N/A	N/A	37627	1	
35	BMS1 Fault3	RO	Bitfield 16	N/A	N/A	37628	1	
36	BMS1 Fault4	RO	Bitfield 16	N/A	N/A	37629	1	
37	BMS1 Fault5	RO	Bitfield 16	N/A	N/A	37630	1	
38	BMS1 Fault6	RO	Bitfield 16	N/A	N/A	37631	1	
39	BMS1 Remain Energy	RO	U16	Wh	0.1	37632	1	
40	BMS1 FCC Capacity	RO	U16	Ah	10	37633	1	
41	reserve	RO	U16	N/A	N/A	37634	1	
42	BMS1 Design Energy	RO	U16	Wh	0.1	37635	1	
43	BMS1 Force to Change	RO	U16	N/A	N/A	37636	1	Range: [0, 1] 0: Reset

	battery Flag							1: Set Note: If set, pcs should charge the battery until the status is reset.
44	BMS2 Connection Status	RO	U16	N/A	N/A	37700	1	0: Offline 1: Online
45	BMS2 Master Version	RO	U16	N/A	N/A	37701	1	
46	BMS2 Master Type	RO	U16	N/A	N/A	37702	1	
47	BMS2 Master SN	RO	STR	N/A	N/A	37703	16	
48	BMS2 Slave Number	RO	U16	N/A	1	37730	1	Range:[0, 32], and 0 is invalid.
49	BMS2 Slave 1 Version	RO	U16	N/A	N/A	37731	1	Maximum support for 32 channels of slave control. The number of channels actually read by the host computer is in accordance with the number of channels defined in "BMS2 Number of Slaves". The corresponding version of each battery: 37731+ (n - 1), where n is the number of slaves in the range of [1, 32].
50	BMS2 Slave 2 Version	RO	U16	N/A	N/A	37732	1	
51	BMS2 Slave1 SN	RO	STR	N/A	N/A	37795	16	最大支持32路从控。上位机实际读取路数按照“BMS2从控个数”定义的路数读取。每路电池对应的SN: 37795+16* (n - 1), 其中n
52	BMS2 Slave2 SN	RO	STR	N/A	N/A	37811	16	

								为从控个数范围是[1, 32]
53	BMS2 Voltage	RO	U16	V	10	38307	1	
54	BMS2 Current	RO	I16	A	10	38308	1	
55	BMS2 Ambient Temperature	RO	I16	°C	10	38309	1	
56	BMS2 SoC	RO	U16	%	1	38310	1	
57	BMS2 Max Temperature	RO	I16	°C	10	38315	1	
58	BMS2 Min Temperature	RO	I16	°C	10	38316	1	
59	BMS2 Max Cell Voltage	RO	U16	mV	1	38317	1	
60	BMS2 Min Cell Voltage	RO	U16	mV	1	38318	1	
61	BMS2 SOH	RO	U16	%	1	38322	1	
62	BMS2 Fault1	RO	Bitfield 16	N/A	N/A	38324	1	
63	BMS2 Fault2	RO	Bitfield 16	N/A	N/A	38325	1	
64	BMS2 Fault3	RO	Bitfield 16	N/A	N/A	38326	1	
65	BMS2 Fault4	RO	Bitfield 16	N/A	N/A	38327	1	
66	BMS2 Fault5	RO	Bitfield 16	N/A	N/A	38328	1	
67	BMS2 Fault6	RO	Bitfield 16	N/A	N/A	38329	1	
68	BMS2 Remain Energy	RO	U16	Wh	0.1	38330	1	
69	BMS2 FCC Capacity	RO	U16	Ah	10	38331	1	
70	reserve	RO	U16	N/A	N/A	38332	1	
71	BMS2 Design Energy	RO	U16	Wh	0.1	38333	1	

72	BMS2 Force to Change battery Flag	RO	U16	N/A	N/A	38334	1	Range: [0, 1] 0: Reset 1: Set Note: If set, pcs should charge the battery until the status is reset.
----	-----------------------------------	----	-----	-----	-----	-------	---	---

Table 3-4 Register definition table

Serial number	Signal name	Read and write	Type	Unit	Gain	Address	Number	Scope
73	Meter1/CT1 Connection State	RO	U16	N/A	N/A	38801	1	0 : Disconnect 1 : Connect
74	Meter1/CT1 R Phase Voltage	RO	I32	V	10	38802	2	
75	Meter1/CT1 S Phase Voltage	RO	I32	V	10	38804	2	
76	Meter1/CT1 T Phase Voltage	RO	I32	V	10	38806	2	
77	Meter1/CT1 R Phase Current	RO	I32	A	1000	38808	2	
78	Meter1/CT1 S Phase Current	RO	I32	A	1000	38810	2	
79	Meter1/CT1 T Phase Current	RO	I32	A	1000	38812	2	
80	Meter1/CT1 Combined Active Power	RO	I32	W	10	38814	2	
81	Meter1/CT1 R Phase Active Power	RO	I32	W	10	38816	2	
82	Meter1/CT1 S Phase Active Power	RO	I32	W	10	38818	2	
83	Meter1/CT1 T Phase	RO	I32	W	10	38820	2	

	Active Power							
84	Meter1/CT1 Combined Reactive Power	RO	I32	Var	10	38822	2	
85	Meter1/CT1 R Phase Reactive Power	RO	I32	Var	10	38824	2	
86	Meter1/CT1 S Phase Reactive Power	RO	I32	Var	10	38826	2	
87	Meter1/CT1 T Phase Reactive Power	RO	I32	Var	10	38828	2	
88	Meter1/CT1 Combined Apparent Power	RO	I32	VA	10	38830	2	
89	Meter1/CT1 R Phase Apparent Power	RO	I32	VA	10	38832	2	
90	Meter1/CT1 S Phase Apparent Power	RO	I32	VA	10	38834	2	
91	Meter1/CT1 T Phase Apparent Power	RO	I32	VA	10	38836	2	
92	Meter1/CT1 Combined Power Factor	RO	I32	N/A	1000	38838	2	
93	Meter1/CT1 R Phase Power Factor	RO	I32	N/A	1000	38840	2	
94	Meter1/CT1 S Phase Power Factor	RO	I32	N/A	1000	38842	2	
95	Meter1/CT1 T Phase Power Factor	RO	I32	N/A	1000	38844	2	

96	Meter1/CT1 Freq	RO	I32	Hz	100	38846	2	
97	Meter2/CT2 Connection State	RO	U16	N/A	N/A	38901	1	0 : Disconnect 1 : Connect
98	Meter2/CT2 R Phase Voltage	RO	I32	V	10	38902	2	
99	Meter2/CT2 S Phase Voltage	RO	I32	V	10	38904	2	
100	Meter2/CT2 T Phase Voltage	RO	I32	V	10	38906	2	
101	Meter2/CT2 R Phase Current	RO	I32	A	1000	38908	2	
102	Meter2/CT2 S Phase Current	RO	I32	A	1000	38910	2	
103	Meter2/CT2 T Phase Current	RO	I32	A	1000	38912	2	
104	Meter2/CT2 Combined Active Power	RO	I32	W	10	38914	2	
105	Meter2/CT2 R Phase Active Power	RO	I32	W	10	38916	2	
106	Meter2/CT2 S Phase Active Power	RO	I32	W	10	38918	2	
107	Meter2/CT2 T Phase Active Power	RO	I32	W	10	38920	2	
108	Meter2/CT2 Combined Reactive Power	RO	I32	Var	10	38922	2	
109	Meter2/CT2 R Phase Reactive Power	RO	I32	Var	10	38924	2	
110	Meter2/CT2 S Phase Reactive Power	RO	I32	Var	10	38926	2	

111	Meter2/CT2 T Phase Reactive Power	RO	I32	Var	10	38928	2	
112	Meter2/CT2 Combined Apparent Power	RO	I32	VA	10	38930	2	
113	Meter2/CT2 R Phase Apparent Power	RO	I32	VA	10	38932	2	
114	Meter2/CT2 S Phase Apparent Power	RO	I32	VA	10	38934	2	
115	Meter2/CT2 T Phase Apparent Power	RO	I32	VA	10	38936	2	
116	Meter2/CT2 Combined Power Factor	RO	I32	N/A	1000	38938	2	
117	Meter2/CT2 R Phase Power Factor	RO	I32	N/A	1000	38940	2	
118	Meter2/CT2 S Phase Power Factor	RO	I32	N/A	1000	38942	2	
119	Meter2/CT2 T Phase Power Factor	RO	I32	N/A	1000	38944	2	
120	Meter2/CT2 Freq	RO	I32	Hz	100	38946	2	

Table 3-5

Serial number	Signal name	Read and write	Type	Unit	Gain	Address	Number	Scope
121	Protocol Version	RO	U32	N/A	N/A	39000	2	For example, 0x01020304 indicates version V1.02.03.04, and the initial version is V1.01.00.00

122	Model name	RO	STR	N/A	1	39002	16	
123	SN	RO	STR	N/A	1	39018	16	
124	PN	RO	STR	N/A	1	39034	16	
125	Model ID	RO	U16	N/A	1	39050	1	
126	Number of strings	RO	U16	N/A	1	39051	1	
127	Number of MPPTs	RO	U16	N/A	1	39052	1	
128	Rated power (Pn)	RO	I32	kW	1000	39053	2	
129	Maximum active power (Pmax)	RO	I32	kW	1000	39055	2	
130	Maximum apparent value (Smax)	RO	I32	kVA	1000	39057	2	
131	Maximum reactive power (Qmax, fed into the grid)	RO	I32	kVar	1000	39059	2	
132	Maximum reactive power (Qmax, absorbed from the grid)	RO	I32	kVar	1000	39061	2	
133	Status 1	RO	Bitfield1 6	N/A	1	39063	1	Bit0: Standby Bit1: Reserved Bit2: Operation Bit3: Reserved Bit4: Reserved Bit5: Reserved Bit6: Fault Bit7: Reserved
134	reserve	RO	Bitfield1 6			39064	1	
135	Status 3	RO	Bitfield3 2	N/A	1	39065	2	Bit0: Off-grid or not 0: Not off-grid

								1: Off-grid	
136	Alarm 1	RO	Bitfield1 6	N/A	1	39067	1	Refer to 4.1 Alarm information	
137	Alarm 2	RO	Bitfield1 6	N/A	1	39068	1	Refer to 4.1 Alarm information	
138	Alarm 3	RO	Bitfield1 6	N/A	1	39069	1	Refer to 4.1 Alarm information	
139	PV1 voltage	RO	I16	V	10	39070	1	Supports up to 24 channels of string information. The actual number of reading channels of the host computer is based on the number of channels defined by "number of strings". The actual corresponding voltage and current register addresses of each string are PVn voltage: $39070 + 2*(n - 1)$, PVn current: $39071 + 2*(n - 1)$. Where n is the string number range is [1, 24]	
140	PV1 current	RO	I16	A	100	39071	1		
141	PV2 voltage	RO	I16	V	10	39072	1		
142	PV2 current	RO	I16	A	100	39073	1		
143	PV3 voltage	RO	I16	V	10	39074	1		
144	PV3 current	RO	I16	A	100	39075	1		
145	PV4 voltage	RO	I16	V	10	39076	1		
146	PV4 current	RO	I16	A	100	39077	1		
147	Total PV input power	RO	I32	kW	1000	39118	2		-
148	reserve	RO	U16			39120	1		-
149	reserve	RO	U16			39121	1	-	
150	reserve	RO	U16			39122	1	-	

151	Grid R phase voltage	RO	I16	V	10	39123	1	
152	Grid S-phase voltage	RO	I16	V	10	39124	1	
153	Grid T-phase voltage	RO	I16	V	10	39125	1	
154	Inverter R phase current	RO	I32	A	1000	39126	2	
155	Inverter S phase current	RO	I32	A	1000	39128	2	
156	Inverter T phase current	RO	I32	A	1000	39130	2	
157	reserve	RO	U 32			39132	2	
158	Active power	RO	I32	kW	1000	39134	2	
159	Reactive power	RO	I32	kVar	1000	39136	2	
160	power factor	RO	I16	N/A	1000	39138	1	
161	Grid frequency	RO	I16	Hz	100	39139	1	
162	reserve	RO	U16			39140	1	
163	internal temperature	RO	I16	°C	10	39141	1	
164	reserve	RO	U16			39142	1	
165	reserve	RO	U16			39143	1	
166	reserve	RO	U16			39144	1	
167	reserve	RO	U32			39145	2	
168	reserve	RO	U32			39147	2	
169	Cumulative power generation	RO	U 32	kWh	100	39149	2	

170	Power generation on the day	RO	U 32	kWh	100	39151	2	
171	reserve	RO	U16			39153	1	
172	reserve	RO	U32			39154	2	
173	reserve	RO	U16			39156	1	
174	reserve	RO	U16			39157	1	
175	reserve	RO	U32			39158	2	
176	reserve	RO	U16			39160	1	
177	reserve	RO	U16			39161	1	
178	[Energy storage module 1] Charge and discharge power *	RO	I32	W	1	39162	2	> 0: charging < 0: discharging
179	reserve	RO	U32			39164	2	
180	reserve	RO	U32			39166	2	
181	[Meter collection] Active power *	RO	I32	W	1	39168	2	> 0: Feed power to the grid < 0: Take power from the grid
182	reserve	RO	U16			39170	1	
183	reserve	RO	U16			39171	1	
184	reserve	RO	U16			39172	1	
185	reserve	RO	U16			39200	1	
186	EPS R Phase Voltage	RO	U16	V	10	39201	1	

187	EPS S Phase Voltage	RO	U16	V	10	39202	1	
188	EPS T Phase Voltage	RO	U16	V	10	39203	1	
189	EPS R Phase Current	RO	I32	A	1000	39204	2	
190	EPS S Phase Current	RO	I32	A	1000	39206	2	
191	EPS T Phase Current	RO	I32	A	1000	39208	2	
192	EPS R Phase Power	RO	I32	W	1	39210	2	
193	EPS S Phase Power	RO	I32	W	1	39212	2	
194	EPS T Phase Power	RO	I32	W	1	39214	2	
195	EPS Combined Power	RO	I32	W	1	39216	2	
196	EPS Frequency	RO	I16	Hz	100	39218	1	
197	Load R Phase Power	RO	I32	W	1	39219	2	
198	Load S Phase Power	RO	I32	W	1	39221	2	
199	Load T Phase Power	RO	I32	W	1	39223	2	
200	Load Combined Power	RO	I32	W	1	39225	2	
201	Battery1 Voltage	RO	I16	V	10	39227	1	
202	Battery1 Current	RO	I32	A	1000	39228	2	
203	Battery1 Power	RO	I32	W	1	39230	2	
204	Battery2 Voltage	RO	I16	V	10	39232	1	
205	Battery2 Current	RO	I32	A	1000	39233	2	

206	Battery2 Power	RO	I32	W	1	39235	2	
207	Battery Combined Power	RO	I32	W	1	39237	2	
208	reserve	RO	I16			39239	1	
209	reserve	RO	I16			39240	1	
210	reserve	RO	I16			39241	1	
211 k	reserve	RO	I32			39242	2	
212	reserve	RO	I32			39244	2	
213	reserve	RO	I32			39246	2	
214 k	INV R Phase Active Power	RO	I32	W	1	39248	2	
215	INV S Phase Active Power	RO	I32	W	1	39250	2	
216	INV T Phase Active Power	RO	I32	W	1	39252	2	
217	reserve	RO	I32			39254	2	
218	INV R Phase Reactive Power	RO	I32	Var	1	39256	2	
219	INV S Phase Reactive Power	RO	I32	Var	1	39258	2	
220	INV T Phase Reactive Power	RO	I32	Var	1	39260	2	
221	reserve	RO	I32			39262	2	
222	INV R Phase Apparent Power	RO	I32	VA	1	39264	2	
223	INV S Phase Apparent Power	RO	I32	VA	1	39266	2	
224	INV T Phase Apparent Power	RO	I32	VA	1	39268	2	

225	INV Combined Apparent Power	RO	I32	VA	1	39270	2	
226	INV Frequency R	RO	I16	Hz	100	39272	1	
227	INV Frequency S	RO	I16	Hz	100	39273	1	
228	INV Frequency T	RO	I16	Hz	100	39274	1	
229	Available Import Power	RO	I32	W	1	39275	2	
230	Available Export Power	RO	I32	W	1	39277	2	
231	PV1 Power	RO	I32	W	1	39279	2	Maximum support for 24 channels of string information. The number of channels actually read by the host computer is in accordance with the number of channels defined in "Number of strings". The voltage and current registers corresponding to each string are as follows PVn Power: $39279 + 2*(n - 1)$ Where n is the string number, the range is [1, 24].
232	PV2 Power	RO	I32	W	1	39281	2	
233	PV3 Power	RO	I32	W	1	39283	2	
234	PV4 Power	RO	I32	W	1	39285	2	
235	MPPT1 Voltage	RO	I16	V	10	39327	1	最大支持24路组串信息。上位机实际读取路数按照“组串个数”定义的路数读取。每路组串实际对应的电压和电
236	MPPT1 Current	RO	I16	A	100	39328	1	
237	MPPT1 Power	RO	I32	W	1	39329	2	

238	MPPT2 Voltage	RO	I16	V	10	39331	1	流寄存器地址为 MPPTn Volt: 39327 + 4*(n - 1) MPPTn Curr: 39328 + 4*(n - 1) MPPTn Power: 39329 + 4*(n - 1) 其中n为组串编号范围 是[1, 24]
239	MPPT2 Current	RO	I16	A	100	39332	1	
240	MPPT2 Power	RO	I32	W	1	39333	2	
241	MPPT3 Voltage	RO	I16	V	10	39335	1	
242	MPPT3 Current	RO	I16	A	100	39336	1	
243	MPPT3 Power	RO	I32	W	1	39337	2	
244	System SoC	RO	U16	%	1	39423	1	Range: [0, 100]

Table 3-6

Serial number	Signal name	Read and write	Type	Unit	Gain	Address	Number	Scope
245	reserve	RO	U16			39600	1	
246	PV total power	RO	U32	kWh	100	39601	2	
247	Total PV power today	RO	U32	kWh	100	39603	2	
248	Total charging capacity	RO	U32	kWh	100	39605	2	
249	Today's total charging capacity	RO	U32	kWh	100	39607	2	
250	Total discharge power	RO	U32	kWh	100	39609	2	
251	Today's total discharge power	RO	U32	kWh	100	39611	2	
252	Total power of feeder network	RO	U32	kWh	100	39613	2	
253	Today's total feeder power	RO	U32	kWh	100	39615	2	
254	Total power taken	RO	U32	kWh	100	39617	2	

255	Today's total electricity consumption	RO	U32	kWh	100	39619	2	
256	Output total power	RO	U32	kWh	100	39621	2	
257	Total power output today	RO	U32	kWh	100	39623	2	
258	Enter total power	RO	U32	kWh	100	39625	2	
259	Enter total power today	RO	U32	kWh	100	39627	2	
260	Total load power	RO	U32	kWh	100	39629	2	
261	Total load power today	RO	U32	kWh	100	39631	2	

Table 3-7

Serial number	Signal name	Read and write	Type	Unit	Gain	Address	Number	Scope
262	reserve	WO	U16	N/A	N/A	45000	1	
263	reserve	WO	U16	N/A	N/A	45001	1	
264	Factory Reset	WO	U16	N/A	N/A	45002	1	Range: [0,1] 0: Invalid; 1: Active
265	Battery power active	WO	U16	N/A	N/A	45003	1	Range: [0, 1] 0:Invalid; 1: Active Note: Only the H3 Smart series is supported.
266	reserve	WO	U16	N/A	N/A	45004	1	
267	Battery power shut-downm	WO	U16	N/A	N/A	45005	1	Range: [0, 1] 0:Invalid; 1: Active Note: Only the H3 Smart series is supported.

268	Battery power ON/OFF	RO	U16	N/A	N/A	45006	1	Range: [0, 1] 0: OFF 1: ON
269	Battery Connect Enable	RW	U16	N/A	N/A	45007	1	Range: [0, 1] 0: Disable 1: Enable Note: Only the H3 Smart series is supported.

Table 3-8

Serial number	Signal name	Read and write	Type	Unit	Gain	Address	Number	Scope
270	reserve	RO	U16			46000	1	
271	Remote Control	RW	Bitfield 16	N/A	1	46001	1	Bit 0: Remote Control enable 0: Disable 1: Enable Bit 1: Definition for positive direction 0: power-generation system 1: power-consumption system Bits 3:2 : Controlled target 00: AC 01: Battery 10: Grid (CT/Meter) 11: AC (Grid first) Bits 15:4 Reserved
272	Remote Timeout_Set	RW	U16	s	1	46002	1	
273	Remote Control Active Power Command	RW	I32	W	1	46003	2	
274	Remote Control Reactive	RW	I32	Var	1	46005	2	

	Power Command							
275	Remote Timeout Countdown	RO	U16	s	1	46007	1	
276	Pwr_limit Bat_Up	RO	I32	W	1	46018	2	The maximum available discharge power of the battery
277	Pwr_limit Bat_Dn	RO	I32	W	1	46020	2	The maximum available charging power of the battery

Table 3-9

Serial number	Signal name	Read and write	Type	Unit	Gain	Address	Number	Scope
278	reserve	RW	U16			46500	1	
279	Import Power Limit *	RW	I32	W	1	46501	2	
280	Threshold SOC *	RW	U16	%	1	46503	1	
281	Export Peak Limit *	RW	I32	W	1	46504	2	
282	ChrInLowImport *	RW	U16	N/A	1	46506	1	
283	ChrInLowTime1-StartHour *	RW	U16	N/A	1	46507	1	
284	ChrInLowTime1-StartMinute *	RW	U16	N/A	1	46508	1	
285	ChrInLowTime1-EndHour *	RW	U16	N/A	1	46509	1	
286	ChrInLowTime1-EndMinute *	RW	U16	N/A	1	46510	1	
287	ChrInLowTime2-StartHour *	RW	U16	N/A	1	46511	1	
288	ChrInLowTime2-StartMinute *	RW	U16	N/A	1	46512	1	

289	ChrInLowTime2-EndHour *	RW	U16	N/A	1	46513	1	
290	ChrInLowTime2-EndMinute *	RW	U16	N/A	1	46514	1	

Table 3-10

Serial number	Signal name	Read and write	Type	Unit	Gain	Address	Number	Scope
291	reserve	RW	U16			46601	1	
292	reserve	RW	U16			46602	1	
293	reserve	RW	U16			46603	1	
294	reserve	RW	U16			46604	1	
295	reserve	RW	U16			46605	1	
296	reserve	RW	U16			46606	1	
297	Battery maximum charging current *	RW	I16	A	10	46607	1	H3:[0,26] H3-G2:[0,50] H3Pro:[0,50] KH:[0,50] H1:[0 , 40] H1-G2:[0 ,40]
298	Battery maximum discharge current *	RW	I16	A	10	46608	1	H3:[0,26] H3-G2:[0,50] H3Pro:[0,50] KH:[0,50] H1:[0 , 50] H1-G2:[0 ,40]
299	Minimum SoC *	RW	U16	%	1	46609	1	[10,100]
300	Maximum SoC *	RW	U16	%	1	46610	1	[10,100]
301	Minimum SoC OnGrid	RW	U16	%	1	46611	1	[10,100]

	*							
302	EPS Frequency Select * _	RW	U16	N/A	N/A	46612	1	0: invalid 1:50Hz 2: 60Hz
303	EPS Output * _	RW	U16	N/A	N/A	46613	1	0:Disable 2:EPS Mode 3:Ups Mode
304	Balance Load *	RW	U16	N/A	N/A	46614	1	0:Disable 1:Enable
305	Balance Logic First *	RW	U16	N/A	N/A	46615	1	0:Disable 1:Enable
306	Export Power L imit	RW	I32	W	1	46616	2	[0,Pmax]
307	Import Current Limit	RW	I16	A	10	46618	1	
308	Export Current Limit	RW	I16	A	10	46619	1	

Table 3-11 Time Period Table

Serial number	Signal name	Read and write	Type	Unit	Gain	Address	Number	Scope
309	Time Mode Flag	RW	U16	N/A	1	48000	1	Time Period Mode 0:Disable 1:Enable
310	reserve	RW	U16	N/A	1	48001	1	
311	reserve	RW	U16	N/A	1	48002	1	
312	reserve	RW	U16	N/A	1	48003	1	
313	reserve	RW	U16	N/A	1	48004	1	
314	reserve	RW	U16	N/A	1	48005	1	
315	reserve	RW	U16	N/A	1	48006	1	

316	reserve	RW	U16	N/A	1	48007	1	
317	reserve	RW	U16	N/A	1	48008	1	
318	reserve	RW	U16	N/A	1	48009	1	
319	Time Group (N) Disable / Enable	RW	U16	N/A	1	$48010 + 10*(N-1)$	1	Time Group N 0:Disable 1:Enable Note: A maximum of 24 time groups are supported, and its range of value N is [1, 24].
320	Time Group (N) Start Time –Hour Minute	RW	U16	N/A	1	$48011 + 10*(N-1)$	1	High Byte is hour, and its range is [0, 23]. Low Byte is minute, and its range is [0, 59]. Note: A maximum of 24 time groups are supported, and its range of value N is [1, 24].
321	Time Group (N) End Time – Hour Minute	RW	U16	N/A	1	$48012 + 10*(N-1)$	1	High Byte is hour, and its range is [0, 23]. Low Byte is minute, and its range is [0, 59]. Note: A maximum of 24 time groups are supported, and its range of value N is [1, 24].
322	Time Group (N) Work Mode	RW	U16	N/A	1	$48013 + 10*(N-1)$	1	1: Self-Use 2: Feed-In

								<p>3: BackUp 4: Peak Shaving 5: Power Station 6: Force Charge 7: Force Discharge</p> <p>Note: A maximum of 24 time groups are supported, and its range of value N is [1, 24].</p>
323	Time Group (N) MaxSoC	RW	U8	%	1	48014 + 10*(N-1)	1	<p>Range: [10, 100]</p> <p>Note: A maximum of 24 time groups are supported, and its range of value N is [1, 24].</p>
	Time Group (N) MinSoC OnGrid	RW	U8	%	1			<p>Range: [10, 100] Where, >= MinSoC && <= MaxSoC</p> <p>Note: A maximum of 24 time groups are supported, and its range of value N is [1, 24].</p>
324	Time Group (N) FDSOC	RW	U16	%	1	48015 + 10*(N-1)	1	<p>Range: [MinSoC OnGrid, 100]</p> <p>Note: A maximum of 24 time groups are supported, and its range of value N is [1, 24].</p>

325	Time Group (N) FDPWR	RW	U16	W	1	$48016 + 10*(N-1)$	1	Range: [0, Pmax] Note: A maximum of 24 time groups are supported, and its range of value N is [1, 24].
326	Time Group (N) reserve	RW	U16	N/A	1	$48017 + 10*(N-1)$	1	Note: A maximum of 24 time groups are supported, and its range of value N is [1, 24].
327	Time Group (N) reserve	RW	U16	N/A	1	$48018 + 10*(N-1)$	1	Note: A maximum of 24 time groups are supported, and its range of value N is [1, 24].
328	Time Group (N) reserve	RW	U16	N/A	1	$48019 + 10*(N-1)$	1	Note: A maximum of 24 time groups are supported, and its range of value N is [1, 24].

Note:

- Time period table is divided into 25 blocks of contiguous registers, namely blocks of contiguous registers 48000 to 48009, 48010 to 48019, 48020 to 48029, 48030 to 48039, 48040 to 48049, 48050 to 48059, 48060 to 48069, 48070 to 48079, 48080 to 48089, 48090 to 48099, 48100 to 48109, 48110 to 48119, 48120 to 48129, 48130 to 48139, 48140 to 48149, 48150 to 48159, 48160 to 48169, 48170 to 48179, 48180 to 48189, 48190 to 48199, 48200 to 48209, 48210 to 48219, 48220 to 48229, 48230 to 48239, 48240 to 48249. The system supports each block of contiguous registers can be read and written simultaneously.
- Or, time period table is divided into 4 blocks of contiguous registers, namely blocks of contiguous registers 48000 to 48009, 48010 to 48089, 48090 to 480169, 48170 to 48249. The system supports each block of contiguous registers can be read and written simultaneously.

Table 3-12

Serial number	Signal name	Read and write	Type	Unit	Gain	Address	Number	Scope
---------------	-------------	----------------	------	------	------	---------	--------	-------

329	System Time	RW	U32	N/A	N/A	49000	2	[946684800,3155759999] local time
330	reserve	RW	U16			49002	1	
331	reserve	RW	U16			49003	1	
332	reserve	RW	U16			49004	1	
333	[Power Grid Scheduling] None Power compensation (PF)	RW	I16	N/A	1000	49005	1	(-1, -0.8] U [0.8, 1]
334	[Power Grid Scheduling] None Power compensation (Q/S)	RW	I16	N/A	1000	49006	1	[-1.000,+1.000] The equipment end converts this value into a fixed value of Q for reactive power control; where S is Smax
335	[Power grid dispatch] Active power percentage derating (0.1%)	RW	I16	%	10	49007	1	Range: [0, 100.0] Active power fine adjustment interface
336	[Power grid dispatch] Fixed Active power derated (W)	RW	U32	W	1	49008	2	Range: [0, Pmax]
337	[Power grid dispatch] Night Reactive power compensation (kVar)	RW	I32	kVar	1000	49010	2	Range: [-Qmax, Qmax]
338	reserve	RW	MLD			49012	21	
339	reserve	RW	MLD			49033	21	
340	reserve	RW	MLD			49054	21	

341	reserve	RW	U16			49075	1	
342	reserve	RW	U16			49076	1	
343	Power on	RW	U16	N/A	N/A	49077	1	Range: [0,1] 0: invalid 1: valid 读取开关机状态请查询 49228地址的寄存器
344	Shut down	RW	U16	N/A	N/A	49078	1	Range: [0,1] 0: invalid 1: valid 读取开关机状态请查询 49228地址的寄存器
345	Grid standard code	RW	U16	N/A	N/A	49079	1	Reference 4.2 Power Grid Standard Code
346	reserve	RW	U32			49080	2	
347	reserve	RW	U32			49082	2	
348	reserve	RW	U32			49084	2	
349	reserve	RW	U16			49086	1	
350	reserve	RW	U16			49087	1	
351	reserve	RW	U16			49088	1	
352	reserve	RW	MLD			49089	41	
353	reserve	RW	U32			49130	2	
354	reserve	RW	U32			49132	2	
355	reserve	RW	U32			49134	2	
356	Grid point power limit	RW	I32	W	1	49136	2	[0, Pmax] Default value: Pmax
357	reserve	RW	U16			49138	1	

358	reserve	RW	U16			49139	1	
359	reserve	RW	U16			49140	1	
360	reserve	RW	U32			49141	2	
361	reserve	RW	MLD			49143	41	
362	Work mode	RW	U16	N/A	N/A	49203	1	1:Self Use 2:Feedin Priority 3:BackUp 4:Peak Shaving 6:Force Charge 7:Force Discharge
363	DRM	RW	U16	N / A	N/A	49206	1	0: Disable 1: Enable (Only valid under Australian safety regulations)
364	Meter1 /CT1	RW	U16	N / A	N/A	49207	1	0: OFF 1: Meter 1-PHASE 2:CT 3:Meter 3-PHASE
365	Meter2 /CT2 *	RW	U16	N / A	N/A	49208	1	0: OFF 1: Meter 1-PHASE 2: CT 3: Meter 3-PHASE
366	BUZZER	RW	U16	N / A	N/A	49209	1	0: Disable 1: Enable
367	MPPT Switch	RW	U16	N / A	N/A	49210	1	0: Disable 1: Enable
368	Relay1 Switch	RW	U16	N/A	N/A	49211	1	0:Disable 1:Enable
369	Relay2 Switch	RW	U16	N/A	N/A	49212	1	0:Disable 1:Enable
370	Brightness Level	RW	U16	%	1	49221	1	Range: [0,100]

371	Date-Year	RW	U16	N/A	1	49222	1	Range: [2000, 2099]
372	Date-Month	RW	U16	N/A	1	49223	1	Range: [1, 12]
373	Date-Day	RW	U16	N/A	1	49224	1	Range: [1, 31]
374	Time-Hour	RW	U16	N/A	1	49225	1	Range: [0, 23]
375	Time-Minute	RW	U16	N/A	1	49226	1	Range: [0, 59]
376	Time-Second	RW	U16	N/A	1	49227	1	Range: [0, 59]
377	System Power State	RO	U16	N/A	1	49228	1	0: Turn OFF 1: Turn ON
378	Idle State	RW	U16	N/A	1	49229	1	0: Disable 1: Enable
379	Idle Loadpower Threshold	RW	U16	W	1	49230	1	Range: H3: 100~200 H3Pro: 100~600
380	Clear Idle Count	WO	U16	N/A	1	49231	1	0: Clear Idle Count
381	Key Password	RW	STR	N/A	1	49232	8	
382	Network status	RO	U16	N/A	1	49240	1	0: Not connected 1: Disconnection 2: Connection
383	Ripple Control Enable	RW	U16	N/A	1	49241	1	0: Disable 1: Enable
384	Trigger Signal	RO	U16	N/A	1	49242	1	Bit0: K1 status Bit1: K2 status Bit2: K3 status Bit3: K4 status
385	K1 Power Ratio	RW	U16	%	1	49243	1	Range: [0, 100]
386	K2 Power Ratio	RW	U16	%	1	49244	1	Range: [0, 100]
387	K3 Power Ratio	RW	U16	%	1	49245	1	Range: [0, 100]
388	K4 Power	RW	U16	%	1	49246	1	Reserved Range: [0, 100]

389	OffGridMaster	RW	U16	N/A	1	49247	1	0: Free Mode 1: Master Mode
390	Meter Compensation	RW	I16	W	1	49248	1	Range: [-500, 500]
391	GFCI Current	RO	I16	A	100	49249	1	

Notice

marked * are only supported by some models or standard codes.

4 Interface usage instructions

4.1 Alarm information

Table 4-1 Alarm information

Number	Alarm	Bit	Alarm name	Level
1	Alarm 1	0	Input string voltage is high	important
2	Alarm 1	1	DC arc fault *	important
3	Alarm 1	2	String reverse connection	important
4	Alarm 1	3	reserve	
5	Alarm 1	4	reserve	
6	Alarm 1	5	reserve	
7	Alarm 1	6	reserve	
8	Alarm 1	7	Grid power outage	important
9	Alarm 1	8	Abnormal power grid voltage	important
10	Alarm 1	9	reserve	
11	Alarm 1	10	reserve	
12	Alarm 1	11	Abnormal power grid frequency	important
13	Alarm 1	12	reserve	
14	Alarm 1	13	reserve	
15	Alarm 1	14	Output overcurrent	important
16	Alarm 1	15	The DC component of the output current is too large	important

Number	Alarm	Bit	Alarm name	Level
17	Alarm 2	0	Abnormal residual current	important
18	Alarm 2	1	System grounding abnormality	important
19	Alarm 2	2	Low insulation resistance	important
20	Alarm 2	3	Temperature is too high	important
21	Alarm 2	4	reserve	
22	Alarm 2	5	reserve	
23	Alarm 2	6	reserve	
24	Alarm 2	7	reserve	
25	Alarm 2	8	reserve	

26	Alarm 2	9	Energy storage equipment abnormality	important
27	Alarm 2	10	isolated island	important
28	Alarm 2	11	reserve	
29	Alarm 2	12	reserve	
30	Alarm 2	13	reserve	
31	Alarm 2	14	Off-grid output overload *	important
32	Alarm 2	15	reserve	

Number	Alarm	Bit	Alarm name	Level
33	Alarm 3	0	reserve	
34	Alarm 3	1	reserve	
35	Alarm 3	2	reserve	
36	Alarm 3	3	External fan abnormality	important
37	Alarm 3	4	Energy storage reverse connection *	important
38	Alarm 3	5	reserve	
39	Alarm 3	6	reserve	
40	Alarm 3	7	reserve	
41	Alarm 3	8	reserve	
42	Alarm 3	9	Meter Lost	
43	Alarm 3	10	BMS Lost	
44	Alarm 3	11	reserve	
45	Alarm 3	12	reserve	
46	Alarm 3	13	reserve	
47	Alarm 3	14	reserve	
48	Alarm 3	15	reserve	

Notice

The above table is a summary of F OX inverter alarm information. Some alarms need to be equipped with corresponding function modules before they can be detected.

4.2 Grid standard code

Table 4-2 List of power grid standard codes

Enumeration value	Standard name	Applicable countries or regions
0	AS4777_AU	Australia
1	AS4777_NZ	New Zealand
2	G98_UK	U.K.
3	G99_UK	U.K.
4	EN50549_NL	Netherlands
5	CEI021_A	Italy
6	VDE0126	Germany
7	VDE4105_DE	Germany
8	NBR-220_BR	Brazil
9	NBR-240_BR	Brazil
10	IEC61727	India
11	Philippines	Philippines
12	NRS_SA	South Africa
13	Vietnam	Vietnam
14	EN50549_PL	Poland
15	EN50549_PT	Portugal
16	PPDS_CR	Czech Republic
17	UNE-206_SP	Spain
18	RD1699_SP	Spain
19	Belgium	Belgium
20	VFR2019_FR	France
21	UTE_FR	France
22	Singapore	Singapore
23	Indonesia	Indonesia
24	Malaysia	Malaysia
25	Cambodia	Cambodia
26	PEA_TH	Thailand
27	MEA_TH	Thailand

Enumeration value	Standard name	Applicable countries or regions
28	Sri Lanka	Sri Lanka
29	Pakistan	Pakistan
30	Ireland	Ireland
31	Denmark 3.2.1	Denmark
32	Slovakia	Slovakia
33	Austria	Austria
34	Switzerland	Switzerland
35	Slovenia	slovenia
36	Hungary	Hungary
37	Serbia	Serbia
38	Croatia	Croatia
39	Turkey	Türkiye
40	Cyprus	Cyprus
41	Bulgaria	Bulgaria
42	Romania	Romania
43	Greece	Greece
44	Latvia	Latvia
45	Lithuania	Lithuania
46	Estonia	Estonia
47	Sweden	Sweden
48	Norway	Norway
49	Finland	Finland
50	Argentina	Argentina
51	Chile BT	Chile
52	Mexico	Mexico
53	USA	USA
54	Hawaii	Canada
55	CQC_CN	China
56	Japan	Japan
57	CQC_CN-1	China (wide range)
58	Local	India (wide range)

Enumeration value	Standard name	Applicable countries or regions
59	Saudi Arabia	Saudi Arabia
60	AS4777_AU-2020A	Australia(A)
61	AS4777_AU-2020B	Australia(B)
62	AS4777_AU-2020C	Australia(C)
63	AS4777_NZ-2020	New Zealand
64	CQC_CN-2	China (wide range 2)
65	CEI021_B	Italy
66	CEI021_Areti_A	Italy
67	CEI021_Areti_B	Italy
68	NBR-220_BR2022	Brazil
69	Spain	Spain
70	CQC_CN-3	China
71	Puerto Rico	Puerto Rico
72	G98_NI	Northern Ireland
73	G99_NI	Northern Ireland
74	USA-208	USA
75	VDE4110_DE	Germany
76	KSC8564	South Korea
77	KSC8565	South Korea
78	PR-LUMA	Puerto Rico
79	CEI016	Italy
80	DUBAI	Dubai
81	Denmark3.2.2	Denmark
82	TR 3.3.1-DK1	Denmark
83	TR 3.3.1-DK2	Denmark
84	Chile MT-A	Chile
85	Chile MT- B	Chile
86	EN50549_FR	France
87	NBR-127_BR2022	Brazil
88	NBR-W220BR2022	Brazil

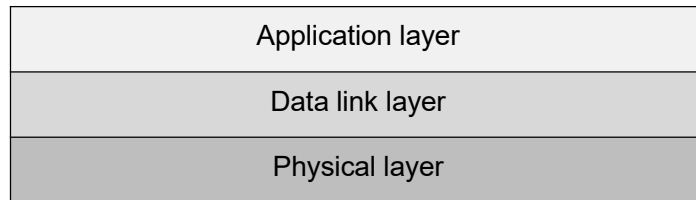
Enumeration value	Standard name	Applicable countries or regions
89	TWN-T	Taiwan, China
90	TWN-S	Taiwan, China
91	Israel	Israel
92	EN50549_FR_W	France
93	Test-50Hz	General
94	Test-60Hz	General
95	CQC_CN-4	China
96	EN 50549-2	Europe
97	CQC_CN-5	China

Notice

The setting of the power grid standard code needs to be selected according to local regulatory requirements.

5 Communication protocol overview

The Modbus communication protocol is divided into the following layers (Physical layer, Data link layer, and Application layer), which are described layer by layer:



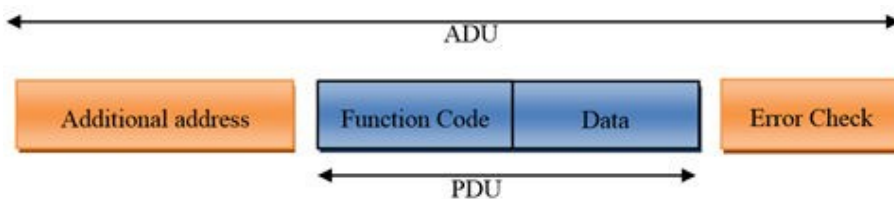
5.1 Physical layer

FoxESS inverter provides Modbus communication based on RS485 physical layer medium. Comply with Modbus-RTU format convention.

5.2 Data link layer

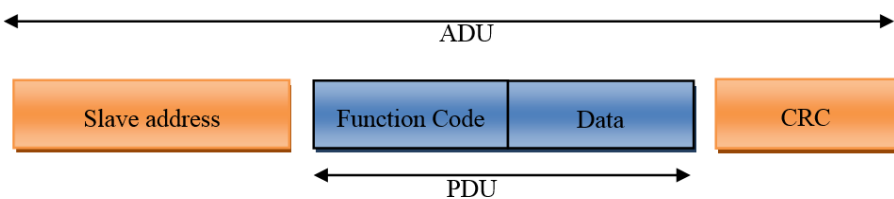
The general frame structure of the Modbus protocol is as follows:

Figure 5-2 Modbus general frame format



5.2.1 Modbus-RTU

Figure 5-3 Modbus-RTU frame format



5.2.1.1 ADU length

Based on the serial bus ADU is designed according to 256 bytes, where:

Slave address : 1 byte

CRC : 2 bytes

PDU: : 253 bytes

5.2.1.2 Mailing address

Modbus-RTU communication is commonly used in serial communication . Slave address represents the

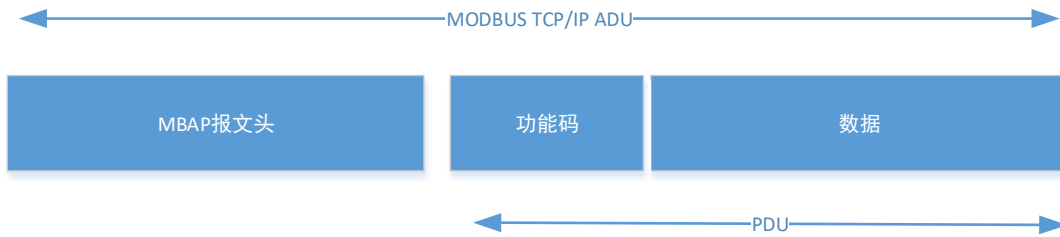

```
};

unsigned short CRC16 ( puchMsg, usDataLen ) /* The function returns the CRC as an unsigned short type */ unsigned char *puchMsg ; /*
message to calculate CRC upon */
unsigned short usDataLen; /* quantity of bytes in message */
{
unsigned char uchCRCHi = 0xFF ; /* high byte of CRC initialized */ unsigned char uchCRCLo
= 0xFF ; /* low byte of CRC initialized */ unsigned ulIndex ; /* will index into CRC lookup table */
while (usDataLen--) /* pass through message buffer */
{
ulIndex = uchCRCLo ^ *puchMsg++ ; /* calculate the CRC */ uchCRCLo = uchCRCHi ^
auchCRCHi[ulIndex] ;
uchCRCHi = auchCRCLo[ulIndex];
}
return (uchCRCHi << 8 | uchCRCLo) ;
}
```

Code source: "MODBUS over Serial Line Specification and Implementation Guide V1.02"

5.2.2 Modbus- TCP

Figure 5-5 Modbus- TCP frame



5.2.2.1 ADU length

The standards-based recommended frame length is 260 bytes. When applying some extended functions, the data can extend the ADU to an appropriate length according to its own resource conditions to improve network transmission efficiency. The actual ADU length is reflected in the MBAP header length field.

5.2.2.2 MBAP message header

When Modbus is applied on TCP/IP, a special MBAP header (Modbus application protocol header) will be used to identify the Modbus application data unit (ADU). The MBAP header is divided into 4 fields and a total of 7 words. section, defined as follows:

Table 5-2 MBAP definition table

Data field	Length (Byte)	Description	Client	Server
Transport identifier	2	Request frame and response frame matching identifier	Client allocation, it is recommended that each frame of data request transmission identifier be different	The identifier in the server-side response frame must be consistent with the request frame
Agreement type	2	0 = MODBUS protocol	Client allocation, default is 0	The identifier in the server-side response frame must be consistent with the request frame

Data length	2	Subsequent data length	The client allocates based on actual frames	Server allocates based on actual frame length
Logical device ID	1	0	Client requests allocation based on actual frames	The identifier in the server-side response frame must be consistent with the request frame

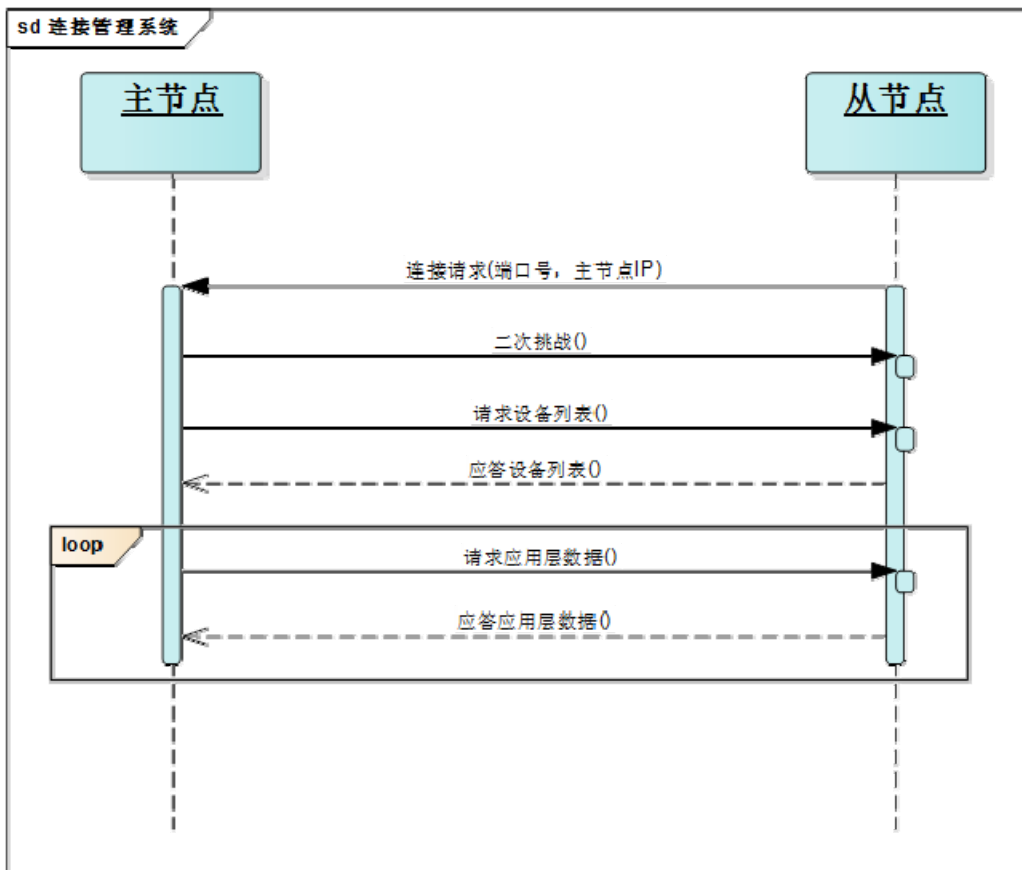
5.2.2.3 TCP port

In a LAN or VPN environment, the master node can actively initiate TCP socket link establishment to the slave node. The master node can use port 502 to request data services from the slave node. In a cross-public network non-VPN environment, the device deployed on the internal network side needs to initiate a TCP socket link establishment to the master node exposed on the public network side. At this time, you need to preset the fixed access port number of the master node on the slave node side. Based on security and traffic streamlining considerations, the master node is required to provide at least 1 encrypted port and 1 non-encrypted port.

5.2.2.4 TCP link building process

Considering the particularity of cross-public network applications, this section only focuses on describing this scenario. The following figure describes the slave node access process:

Figure 5-7 TCP secure link establishment process



5.3 Application layer

5.3.1 Function code list

Table 5-2 Function code list

Function code	Meaning	Remark
0x03	Read register	Supports single and multiple register sequential reads
0x06	Write to a single register	Support single register write action
0x10	Write multiple registers	Supports continuous writing of multiple registers

5.3.2 Exception code list

Each network element type needs to ensure that the exception code of its product is unique, and the name and description are provided uniformly (Chinese and English description information needs to be provided in the network element interface document). Multiple versions of the same network element type must be forward compatible, and the encoding that has been used cannot be reused for others.

Table 5-3 Summary table of exception codes returned by network elements (0x00-0x8F is the public exception code segment)

Code	Name	Meaning
0x01	illegal function	For the server (or slave), the function code received in the query is an impermissible operation. This may be because the function code only applies to new equipment and is not available in the selected unit. It is also indicated that the server (or slave) handles this request in an error state, for example because it is unconfigured and requires a return register value.
0x02	Illegal data address	The query request received by the server contains a disallowed register address. More specifically, the combination of register starting address and register number is invalid. For a controller with 100 registers, the first PDU address is 0, and the last one is 99. If the starting register address in a request is 96 and the number of registers is 4, then this request can get the return value of registers 96, 97, 98, 99. If a request is submitted with a starting register address of 96 and the number of registers is 5, then the request will fail and the exception code 0x02 "illegal data address" returned, because it is trying to read registers 96, 97, 98, 99, 100, But 100 is an address that has no actual definition .
0x03	illegal data value	The value included in the query is not allowed for the server (or slave). This value indicates a failure in the remaining structure of the combined request, for example: the implicit length is incorrect. It does not mean that, because the MODBUS protocol is not aware of the significance of any special value in any special register, the data item submitted for storage in the register has a value other than that expected by the application.
0x04	Slave node device failure	During execution, the server failed.
0x06	slave device busy	The server cannot accept the MODBUS request PDU. It is the client application's responsibility to decide if and when to resend the request.
0x80	No permission	Authentication fails or permissions expire after timeout, and operation is prohibited.

5.3.3 Read register (0x03)

5.3.3.1 Master node request frame format

Table 5-4 Master node request frame format

Data field	Length	Description
Function code	1 byte	0x03
Register starting address	2 bytes	0x0000~0xFFFF
Number of registers	2 bytes	1~125

5.3.3.2 Normal response frame format from the node

Table 5-5 Normal response frame format of the slave node

Data field	Length	Description
Function code	1 byte	0x03
Number of bytes	1 byte	2×N
Register value	2×N bytes	NA

 **illustrate**

N is the number of registers.

5.3.3.3 Slave node exception response frame format

Table 5-6 Slave node exception response frame format

Data field	Length	Description
Function code	1 byte	0x83
Exception code	1 byte	See exception code list

5.3.4 Write a single register (0x06)

5.3.4.1 Master node request frame format

Table 5-7 Master node request frame format

Data field	Length	Description
Function code	1 byte	0x06
Register address	2 bytes	0x0000~0xFFFF
Register value	2 bytes	0x0000~0xFFFF

5.3.4.2 Normal response frame format from the node

Table 5-8 Normal response frame format of the slave node

Data field	Length	Description
Function code	1 byte	0x06
Register address	2 bytes	0x0000~0xFFFF
Register value	2 bytes	0x0000~0xFFFF

5.3.4.3 Slave node exception response frame format

Table 5-9 Slave node exception response frame format

Data field	Length	Description
Function code	1 byte	0x86
Exception code	1 byte	See exception code list

5.3.5 Write multiple registers (0x10)

5.3.5.1 Master node request frame format

Table 5-10 Master node request frame format

Data field	Length	Description
Function code	1 byte	0x10
Register starting address	2 bytes	0x0000~0xFFFF
Number of registers	2 bytes	0x0000~0x007B
Number of bytes	1 byte	2×N
Register value	2×N bytes	Value

illustrate

N is the number of registers.

5.3.5.2 Normal response frame format from the node

Table 5-11 Normal response frame format of the slave node

Data field	Length	Description
Function code	1 byte	0x10
Register address	2 bytes	0x0000~0xFFFF
Number of registers	2 bytes	0x0000~0x007B

5.3.5.3 Slave node exception response frame format

Table 5-12 Slave node exception response frame format

Data field	Length	Description
Function code	1 byte	0x90
Exception code	1 byte	See exception code list

5.3.6 Configure slave address

This function is used to configure the MODBUS address .

The data frame is composed as follows :

Data field	Value	Description
Slave address	0xF9	Configure the slave address exclusively
Function code	0x06	Write to a single register
Register address	0x5A5A	special address
Register value	2 bytes	Write slave address Range: 10 - 99
CRC 16	2 bytes	

Change record table

version number	change log	time
V1.0	First edition	2023.07.18
V1.01.00.00	Add register definition and Modbus-TCP definition	2023.11.08
V1.02.00.00	Add some registers to optimise document formatting	2023.12.06
V1.03.00.00	Add some registers	2023.12.29
V1.04.00.00	Add some registers, and the meter lost information.	2024.03.20
V1.05.00.00	<ol style="list-style-type: none"> 1. Add register 30032, 36100, 36116, 36132, 36148, 36200, 36216, 36232, 36248, 37635, 38333, and 45002, etc. 2. Modify the definition information for registers 37632, 38330, 39118, etc. 3. Add Alarm 43 information. 	2024.05.16
V1.05.01.00	<ol style="list-style-type: none"> 1. Modify the defined Bits 3:2 for reguster 46001. 	2024.05.17
V1.05.02.00	<ol style="list-style-type: none"> 1. Add register 37636, 38334, 45003, 45005, 45006, 45007, 49232, 49240, 49241, 49242, 49243, 49244, 49245, etc. 2. Modfiy the definition information for registers 37619, 37620, 38317, 38318, 46001, etc. 	2024.08.15
V1.05.03.00	<ol style="list-style-type: none"> 1. Add register 39423, 49008, 49010, 49247, 49248, 49249, etc. 2. Add register table 3-11. 	2025.01.15